

## HOPE CITY . HAITI

## MODULAR21

January 18, 2010

Dear Sir

We are a group of professionals in construction that will like to offer our knowledge and expertise to joint the effort to help Haiti people.

Within this document find a preliminary design sketches for the construction of INSTANT CITY using 40' shipmen containers, it speak by them self. One of the possible construction sites could be located northwest of the airport. We are located in South Florida where thousands of used containers are available.

We already contact yards where we could start the adaptation of containers to be send by ship to Haiti from the four sea ports located in our area.

We have professionals of the different disciplines ready to apply FAST TRACT to this project that in a very short time could manage the construction of the first HOPE CITY in PORT-AU-PRINCE to house 20,000 people in 3,000 apartments' aprox.

As a preliminary action, we need your feed back to optimize responses.

We have a preliminary cost study from 20 to 30 thousand US \$ per unit.

The more important figure is the short time needed to build this housing project.

We are ready to work with you at your convenience.

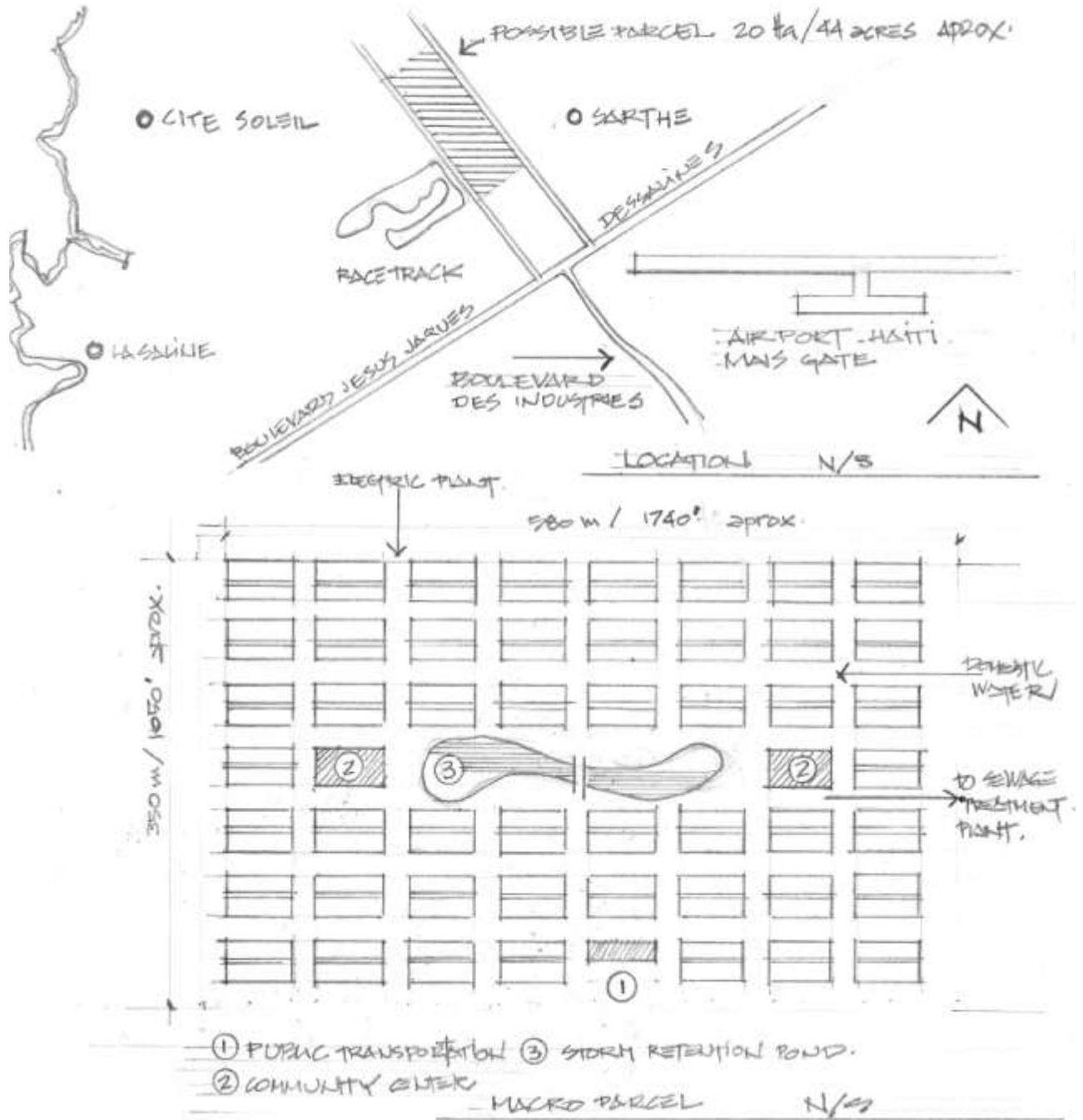
**Vicente Gramage** , Architect  
6021 NW 61 Ave #201  
Fort Lauderdale FL 33319 USA  
phone 954 588 9461

**modular21@gmail.com**

EUROPEAN EXPERIENCE

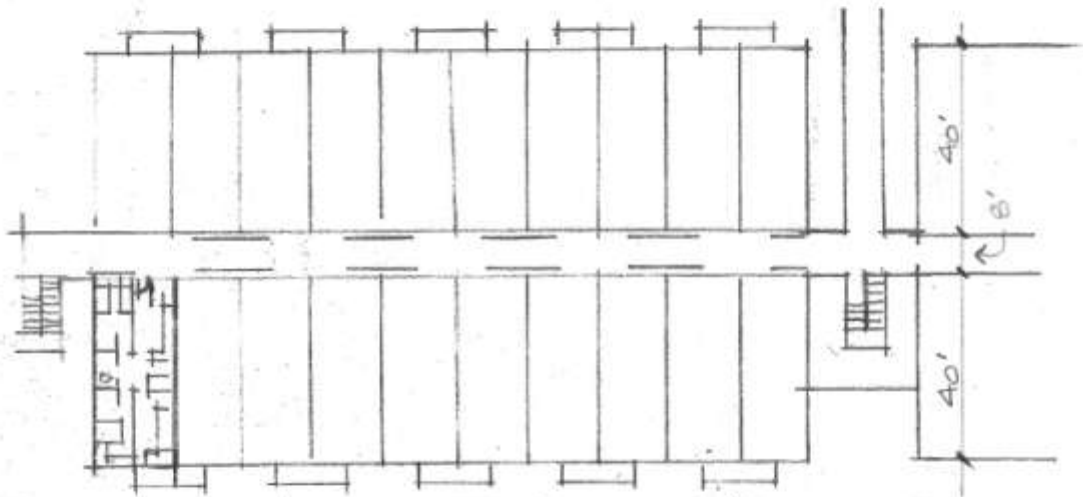
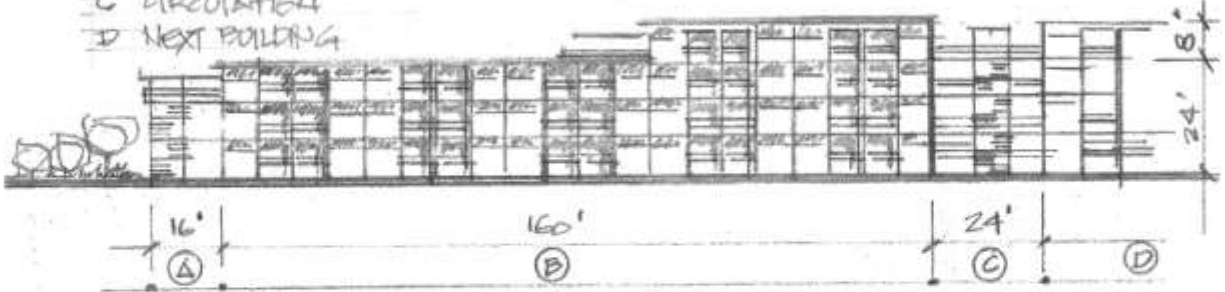


1. HOPE CITY • FORT-AU-PRINCE  
proposal      JAN 15, 2010    H

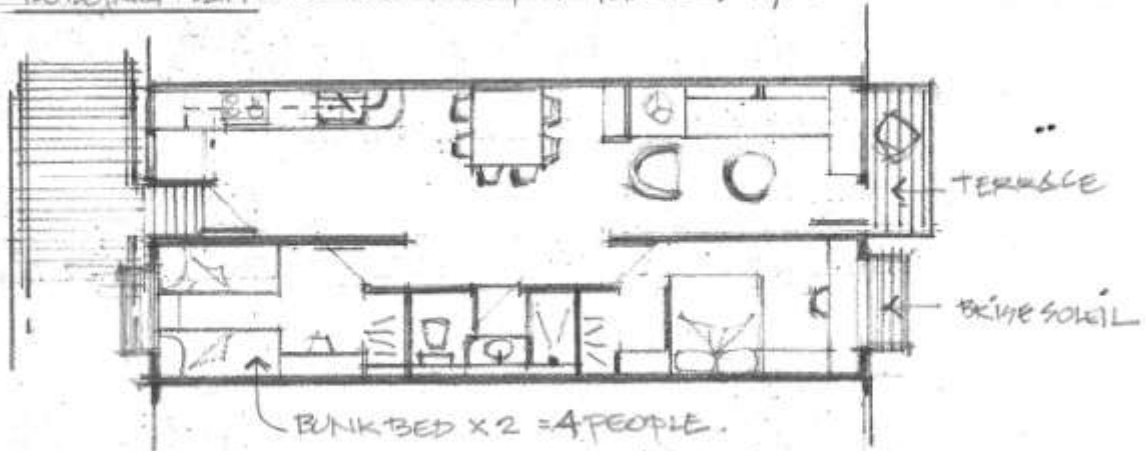


HOPE CITY. 2 ft

- A. CIRCULATION
- B. BUILDING TYPICAL
- C. CIRCULATION
- D. NEXT BUILDING



BUILDING PLAN: 60+ APARTMENTS, TYPICAL, N/M



APARTMENT TYPICAL - 640 sf. / SEVERAL PEOPLE - 7 N/M  
TWO 40' SHIPPING CONTAINERS